

World-class Wireless Networks



From 2 meters to 245 kilometers
Supported by end-to-end cloud management



ePMP™ 1000

Wireless service providers and enterprises need reliable, high-quality broadband connectivity that can be rapidly deployed and expanded. With ePMP, no problem.

Featuring 200+Mbps throughput, rock-solid point-to-multipoint and point-to-point topologies and GPS Synchronization enabling industry-leading frequency reuse, all built on a reliable platform for an affordable price.

PMP 450

The standard in wireless broadband access network connectivity, PMP 450 is renowned worldwide for reliability, reach and performance.

Available in point-to-point and point-to-multipoint configurations and product variants, as well as the new industrial grade 450i line, PMP 450 is designed to perform with 125Mbps throughput and GPS Synchronization to take your network further.



cnPilot™

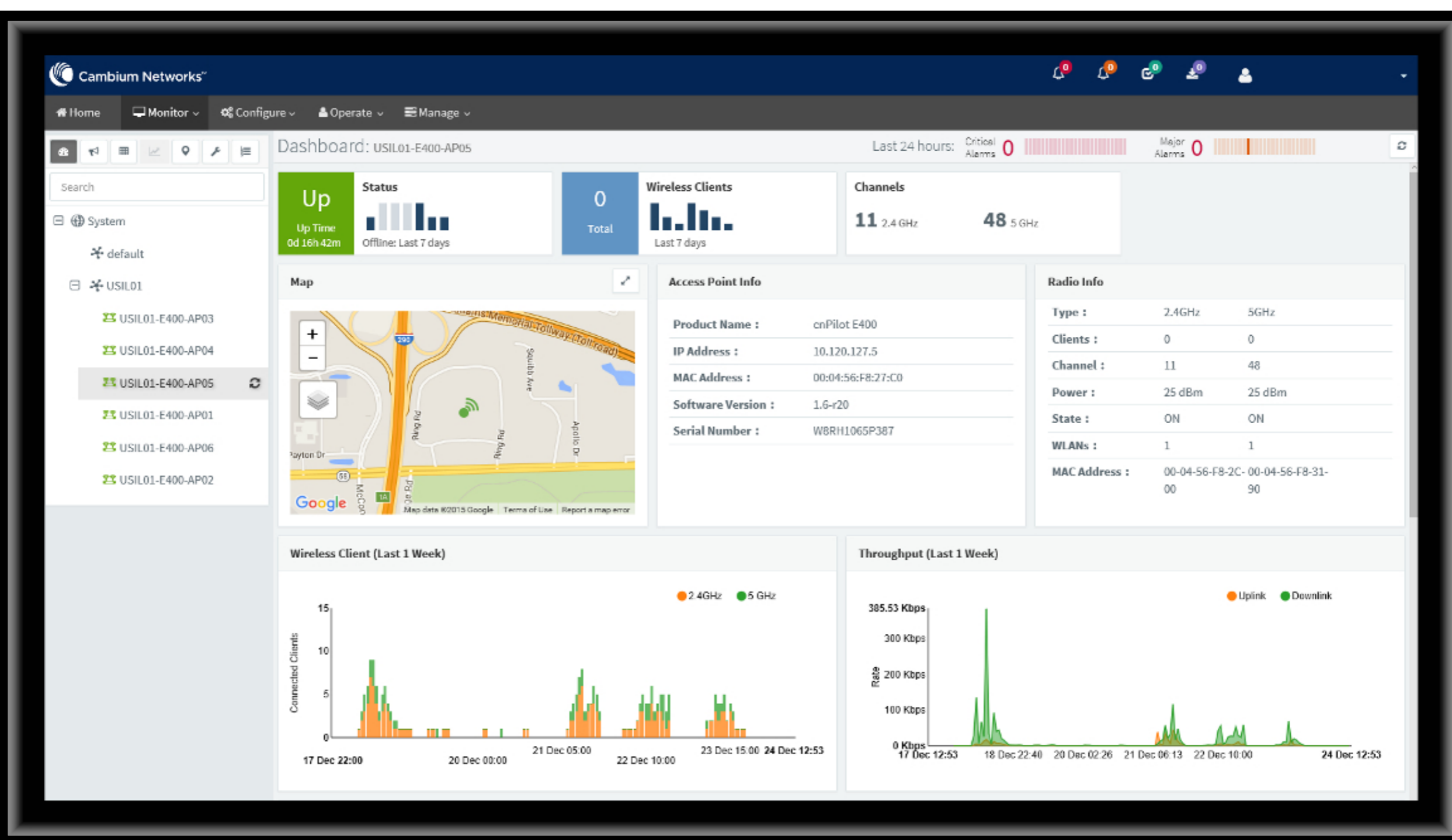
cnPilot Indoor, Outdoor and Residential & Small Business offer cloud managed, dual band 802.11ac enterprise grade WiFi with a rich set of features and high performance.

With cnMaestro cloud management and integration with ePMP and PMP 450 access layer solutions, managing your whole network and bringing WiFi where you need it has never been easier.



cnMaestro™

Built from the ground up for secure, scalable end-to-end cloud management, cnMaestro is your single pane of glass to monitor and manage your entire network. Remote software and configuration updates, alarms and alerts, and at-a-glance hop-by-hop network status mean simplified daily operations, troubleshooting and maintenance for you.



PTP 650

When it absolutely has to work, whether its connecting an emergency response vehicle back to base or your access network to the internet, you need the legendary reliability of the PTP series.

With Dynamic Spectrum Optimization, hitless adaptive modulation and industry-leading spectral efficiency and reliability, PTP 650 is the trusted choice of network operators worldwide.

PTP 820

PTP 820 is a point-to-point licensed microwave backhaul platform that integrates leading networking technology with the industry's most advanced microwave technologies, creating a superior network solution.

Operating from 6 to 38 GHz with up to 80 MHz channel width, delivering multi-gigabit capacity with SyncE and IEEE 1588v2 timing support.

